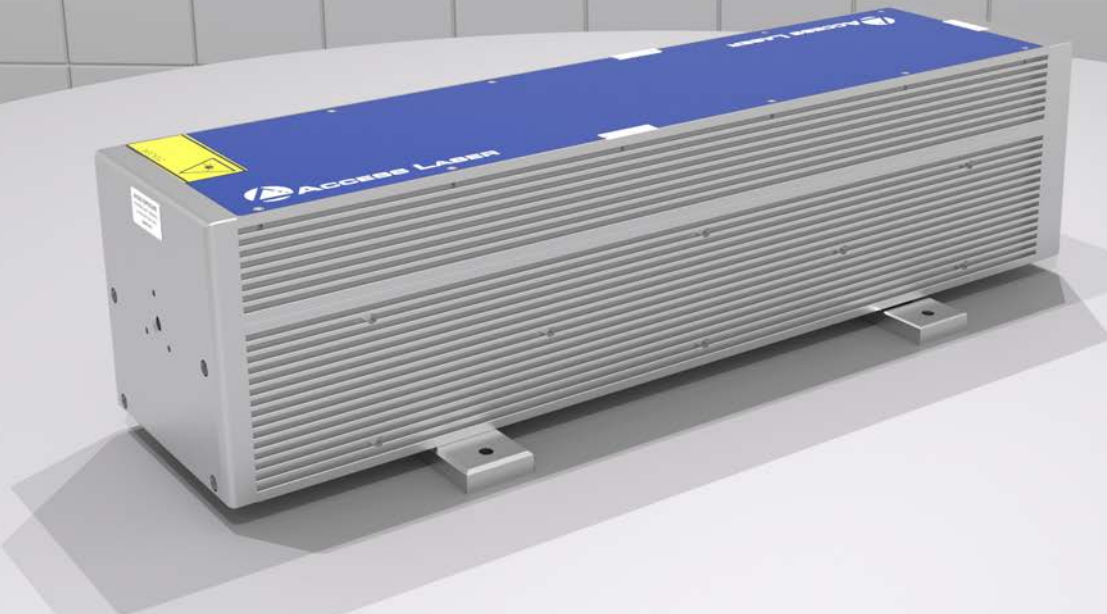


DL500



Laser Power

Wavelength	9.3 μm
Average Power	5 W
Peak Power	500 W
Power Stability	$\pm 10 \%$

Pulse Width Modulation Parameters

Pulse Width	(5 - 25) μs
Pulse Repetition Frequency	(0 - 500) Hz

Dimensions & Weight

Laser Weight	14.8 kg
Dimensions L x W x H	(57.6 x 20.3 x 15.4) cm

Beam Characteristics

Beam Waist Diameter	2.2 mm
Waist Location	Output Coupler
Mode Quality	$M^2 \leq 1.1$
Full Divergence Angle	6.2 mrad
Rise Time	$\leq 10 \mu\text{s}$
Fall Time	$\leq 15 \mu\text{s}$
Polarization	Random

DC Power Requirements

RF Driver Input	48 V; 200 W Min
-----------------	-----------------

Heat & Cooling

Heat Dissipation	$\leq 200 \text{ W}$
Cooling Requirement	Air Cooled
Working Temperature	(5 - 40) $^{\circ}\text{C}$

Notes

Power Stability calculated with average power from cold start:

$$+ \frac{P_{max} - P_{min}}{P_{max} + P_{min}} \quad \frac{1}{e^2}$$

Beam specifications measured at:

All specifications are subject to change without notice.

