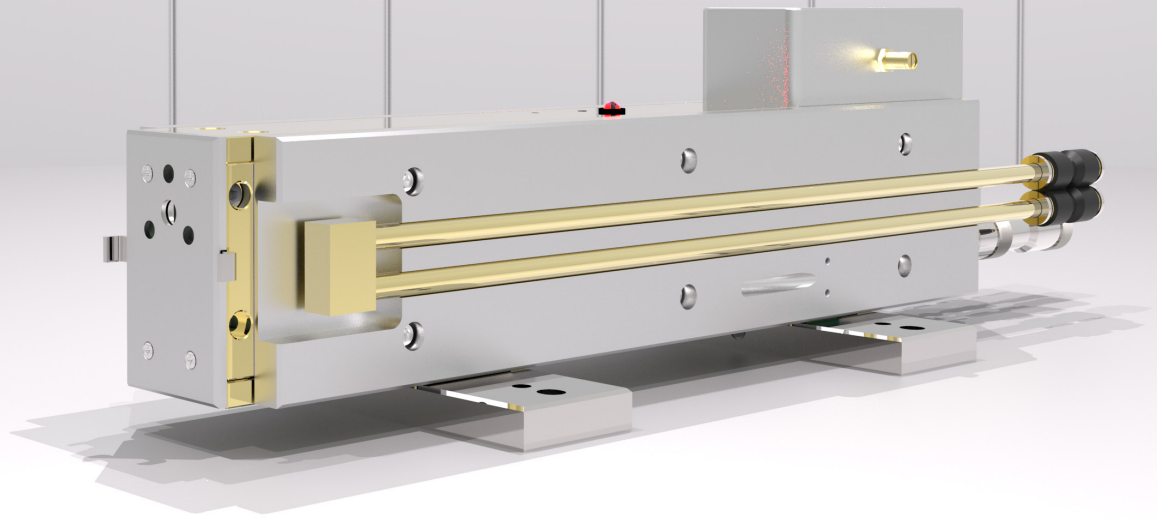


L4-G-¹³CO₂-WC



Laser Power

Wavelength	10.6-11.2 μm
CW Power	0.2 W
Peak Power	0.2 W
Power Stability	± 10 %

Beam Characteristics

Beam Waist Diameter	2.4 mm
Waist Location	Output Coupler
Mode Quality	M ² ≤ 1.2
Full Divergence Angle	5.5 mrad
Rise and Fall time	200 μs
Polarization	≥ 50:1 Linear Vertical

Pulse Width Modulation Parameters

Duty Cycle	0-100 %
Pulse Repetition Frequency	0-100 kHz

DC Power Requirements

RF Driver	12 V
-----------	------

Dimensions & Weight

Laser Weight	9.5 lbs
Dimensions L x W x H	15.4 x 2.5 x 3.7 inch
RF Driver Weight	0.5 lbs

Heat & Cooling

Heat Dissipation	≤ 120 W
Cooling Requirement	Water Cooled
Working Temperature	5 °C to 40 °C

Water Cooling

Min Flow Rate	1 LPM (0.264 GPM)
Recommended Flow Rate	2 LPM (0.528 GPM)
Max Pressure	2.75 bar (450 psi)
Required Chiller Stability	± 0.1 °C
Storage Temp Range	5-50 °C

Notes

Power Stability calculated in CW at thermal equilibrium

$$\pm \frac{P_{max} - P_{min}}{P_{max} + P_{min}}$$

Beam specifications measured at: $\frac{1}{e^2}$

Average power may exceed listed value. All specifications are measured at the strongest line and are subject to change without notice. Guarantee for minimum of 15 lines over the 10R, 10P bands. Specific power at defined lines cannot be guaranteed for standard orders.



ACCESS LASER
Member of the TRUMPF Group

